

Course Information

- **Instructor:** Jerry Nelson, Association of Christian Schools International (ACSI)
- **CEUs:** 6 Bible (6 hours)
- **Certification Option:** Completion of Courses 1–3 fulfills [ACSI's Christian Philosophy of Education Requirement](#).

Course Requirements

- **Assessments:** Pre- and post-assessments and an original artifact composition.
- **Engagement:** Activities, discussion forums, and formative assessments.
- **Artifact:** Must demonstrate understanding of a Christian philosophy of education and be approved by your school's administrator for certification applicants.

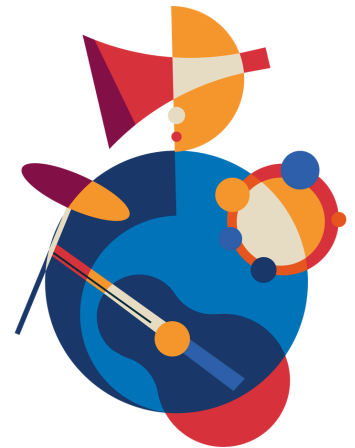
Course Structure

- **Delivery:** Online via ACSI PD platform.
- **Format:** Asynchronous, allowing learners to progress at their own pace.
- **Materials:** Provided through ACSI PD platform.
 - Primary text used: *By Design*, Section One (Chs. 1–4)

Learning Outcomes

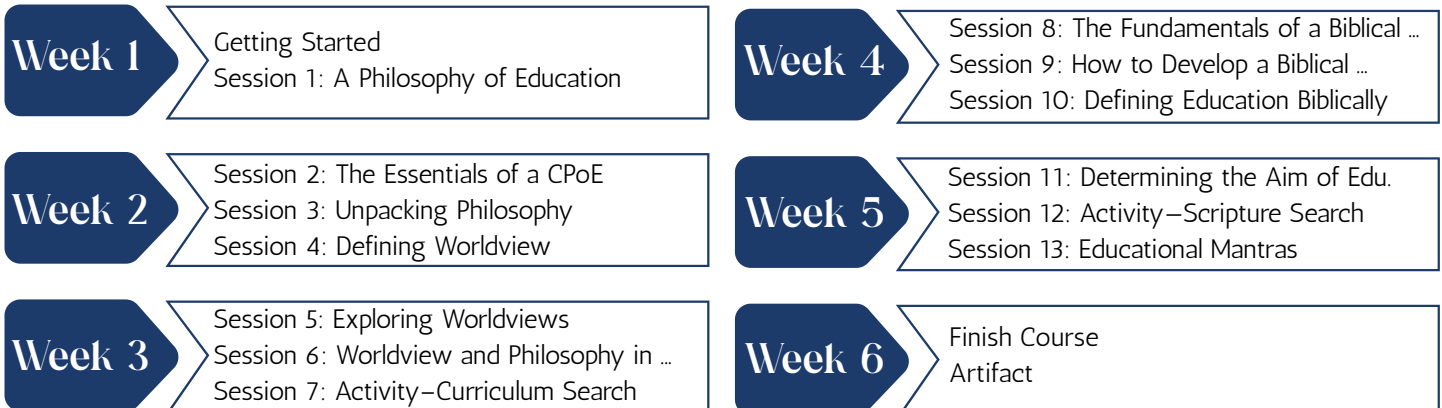
By the end of the course, participants will be able to:

- Define "worldview" and assess its impact on education.
- Understand, articulate, and apply core concepts of a biblical worldview.
- Describe educational goals from a biblical standpoint.



Recommended Schedule

While the course is asynchronous and self-paced, devoting 1–2 hours per week will allow participants to complete the course in 6 weeks.



Course Artifact Checklist

ARTIFACT: a tangible product created to indicate mastery of a skill or component of knowledge

Your Course 1 Artifact should:

Explain what is meant by a **Christian philosophy of education**.

Answer the following **philosophical questions** and include one **supporting Scripture** reference for each response:

- Metaphysics: What is prime reality? (If it is God, what is His nature?)
- Epistemology: Why is it possible to know anything at all? (How do we come to know?)
- Axiology: What is of value? (What is good, beautiful, and ethical?)

Explain why it is important for **educators to hold a biblical worldview**. Be specific and provide at least one personal example.

Provide **specific examples** of how you personally **renew your mind and strengthen your biblical worldview** on a daily, weekly, and annual basis.

Define "**education**" from a biblical worldview perspective.

Describe the **aim or end goal of education**, supported by Scripture.

Format may vary. Consider your audience and purpose. For example:

- For students: Picture book, poster, slideshow
- For parents: Podcast, newsletter, webpage, brochure
- For staff training: Video, slideshow, infographic
- For personal reflection: Journal, scrapbook

Your artifact should be an original composition.

- Reflecting your personal beliefs, values, and worldview
- Valuing your experience as an educator
- Informed by your study of Scripture